

ENTRANCE OPTIONS

Columbia elevator manufactures an outstanding line of Automatic Sliding Entrances.

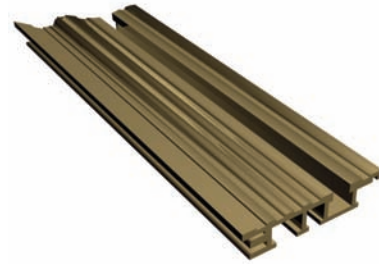
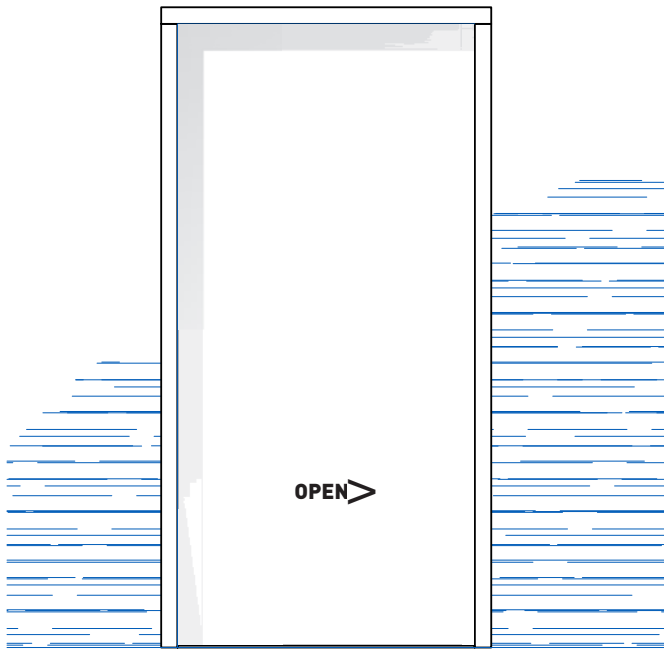
Columbia's entrances are extremely well constructed and offer many advantages and exclusives not available anywhere else in the industry, including the industry's widest range of available opening and transom sizes, and our QuikEnt™ technology. All entrances are manufactured on numerically-controlled punch press equipment, shearing equipment and press brakes, connected by a computer network to the engineering department for the ultimate in speed and quality control.



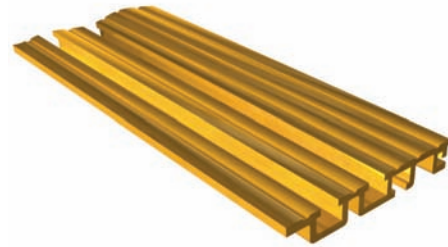
COLUMBIA ELEVATOR PRODUCTS CO., INC.
THE LEADING EDGE IN CABS & DOOR SYSTEMS

STANDARD ENTRANCE OPTIONS - SIDE SLIDING APPLICATIONS

888-858-1558
www.columbia-elevator.com
info@columbia-elevator.com

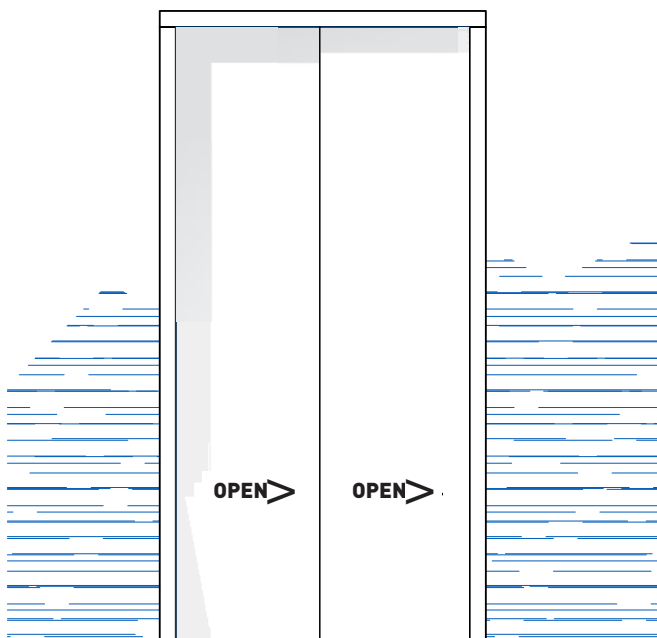


**Nickle Bronze
(Nickle Silver)
Alloy-776
(Single Slide Shown)**

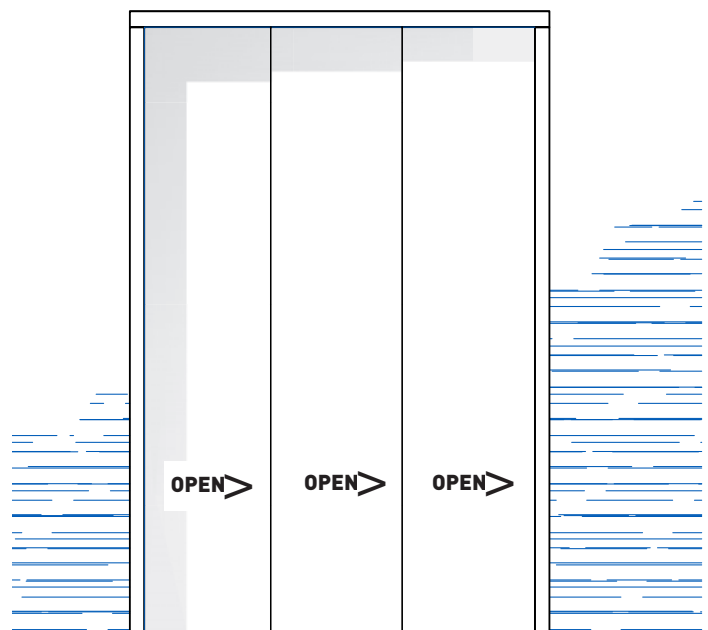


**Yellow Bronze
Alloy - 385
(Two-Speed Shown)**

SINGLE-SPEED SIDE SLIDE



TWO-SPEED SIDE SLIDE



THREE-SPEED SIDE SLIDE

STANDARD ENTRANCE OPTIONS - CENTER OPENING APPLICATIONS

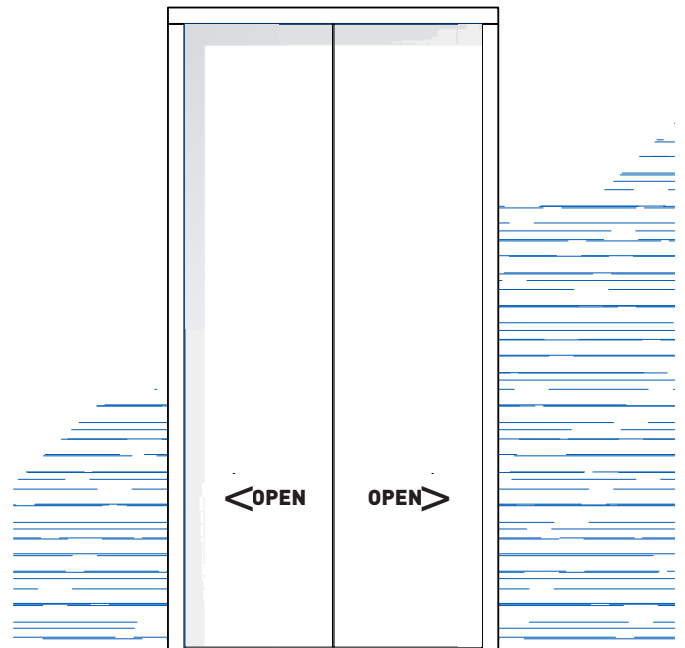
888-858-1558
www.columbia-elevator.com
info@columbia-elevator.com



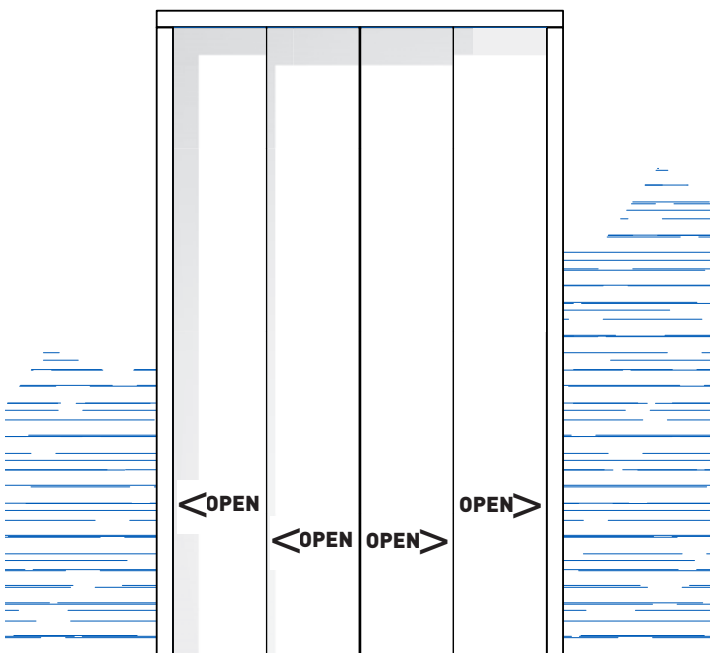
**Aluminum
or Stainless Steel
(Three-Speed Shown)**

Door Designs & Features Available

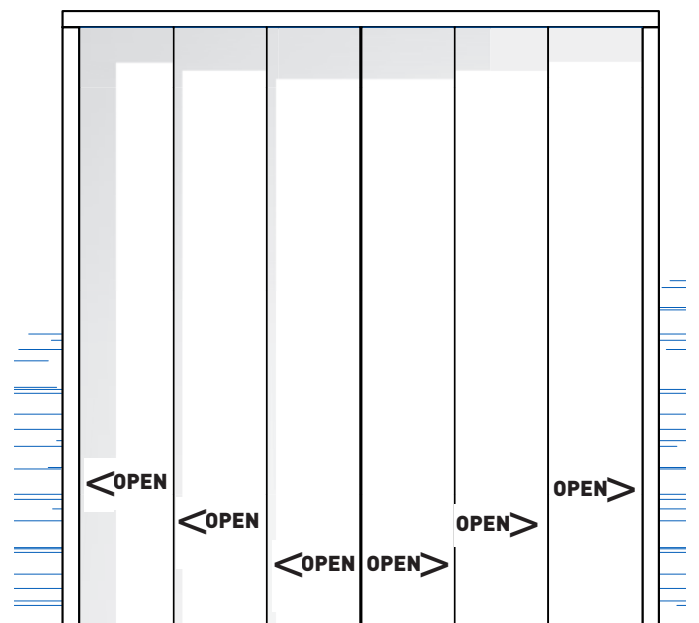
- Insulation / Sound Deadening
- Universal Top Channel - accommodates all major door equipment manufactures
- Unhanded Doors
- QuikDoor Stocking Program - for speedy delivery of doors



SINGLE-SPEED CENTER OPENING



TWO-SPEED CENTER OPENING



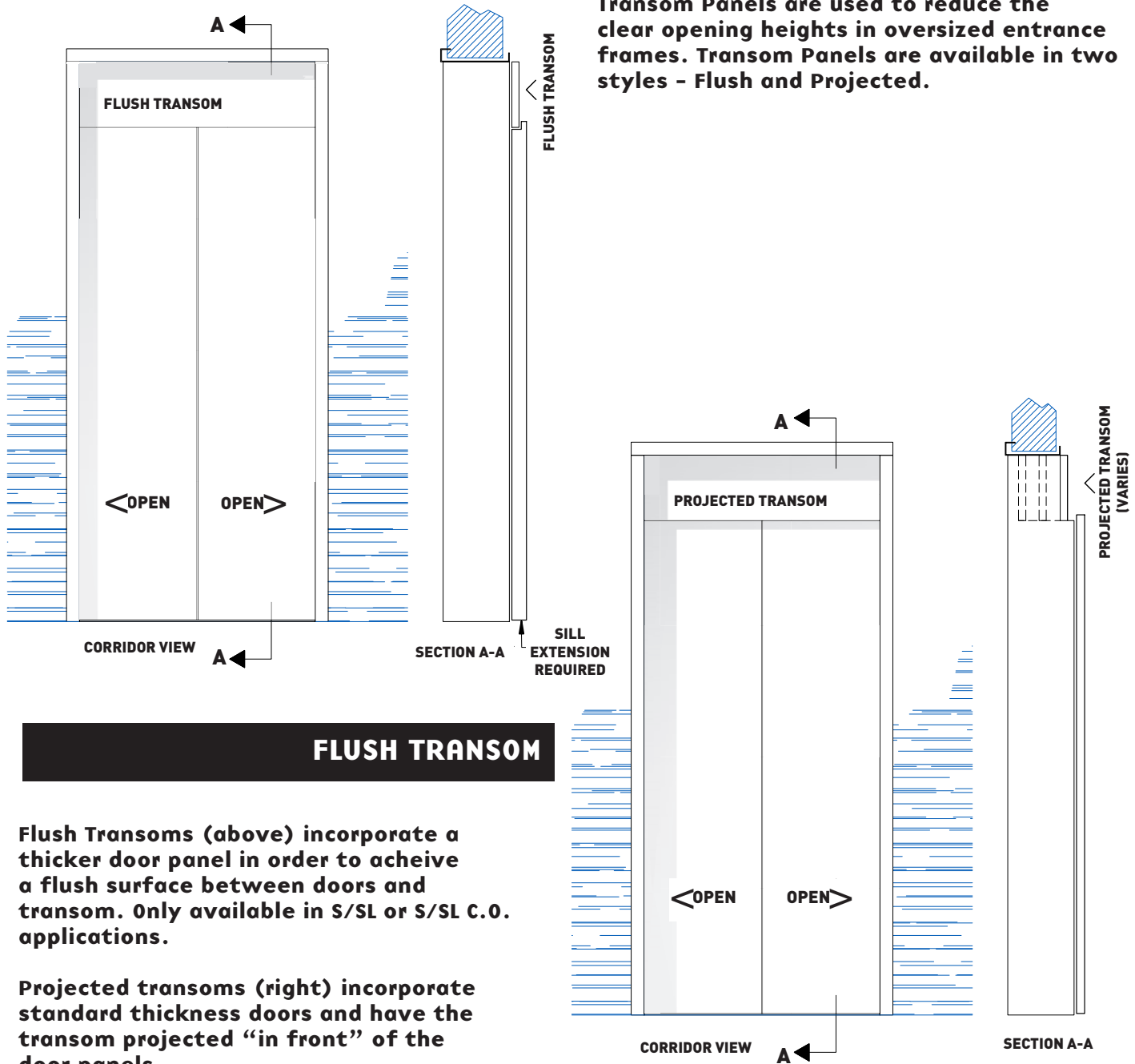
THREE-SPEED CENTER OPENING

SPECIAL APPLICATION OPTIONS - TRANSOM PANELS

888-858-1558
www.columbia-elevator.com
info@columbia-elevator.com

**UNDER CERTAIN FIELD CONDITIONS,
ADDITIONAL COMPONENTS MAY BE REQUIRED, INCLUDING TRANSOM PANELS**

Transom Panels are used to reduce the clear opening heights in oversized entrance frames. Transom Panels are available in two styles - Flush and Projected.



FLUSH TRANSOM

Flush Transoms (above) incorporate a thicker door panel in order to achieve a flush surface between doors and transom. Only available in S/SL or S/SL C.O. applications.

Projected transoms (right) incorporate standard thickness doors and have the transom projected "in front" of the door panels.

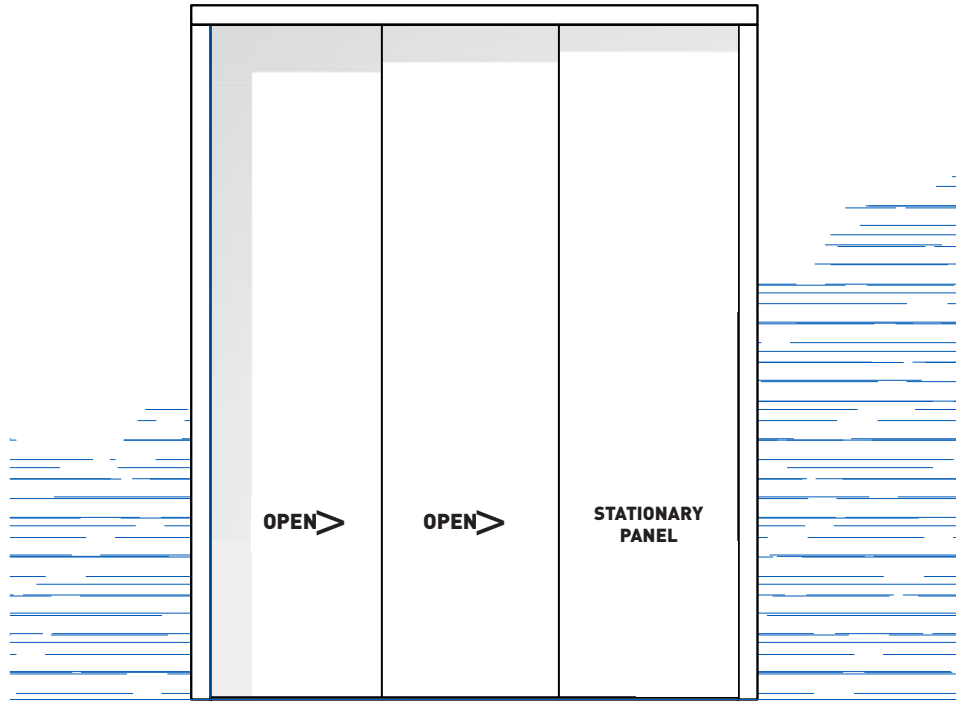
Projected transoms are available with any door type and can be located at any location under the head jamb.

PROJECTED TRANSOM

SPECIAL APPLICATION OPTIONS - STATIONARY PANELS

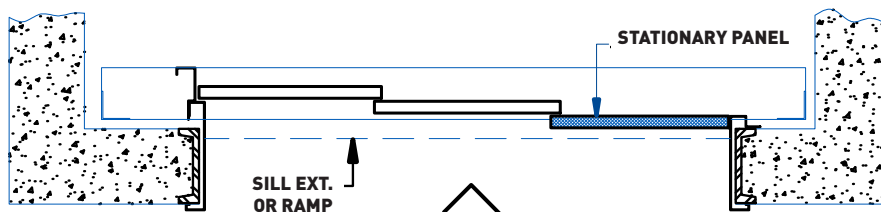
888-858-1558
www.columbia-elevator.com
info@columbia-elevator.com

**UNDER CERTAIN FIELD CONDITIONS,
ADDITIONAL COMPONENTS MAY BE REQUIRED, INCLUDING STATIONARY PANELS**



CORRIDOR VIEW

TWO-SPEED SIDE SLIDE WITH STATIONARY PANEL, CORRIDOR VIEW



CORRIDOR VIEW

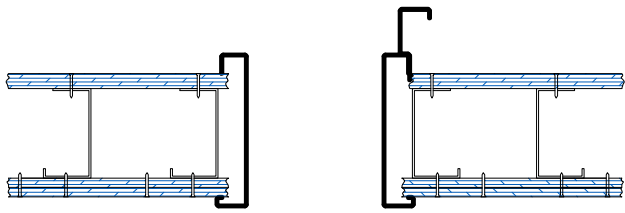
TWO-SPEED SIDE SLIDE WITH STATIONARY PANEL, PLAN VIEW

TWO-SPEED WITH STATIONARY PANEL

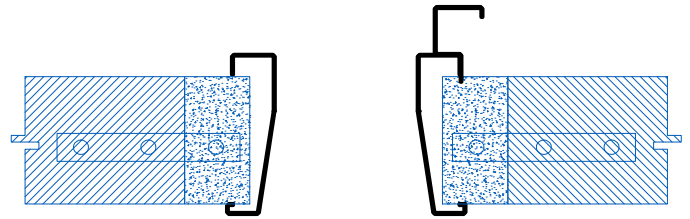
Stationary Panels are used to reduce the clear opening width in over-sized / extra-wide entrance jambs.

JAMBS

Standard frames are provided with Square Jambs (See plan view below.)
Alternative Jamb designs include splay, bullnose and radius.

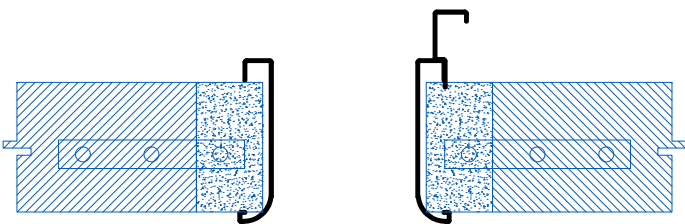


SQUARE JAMBS

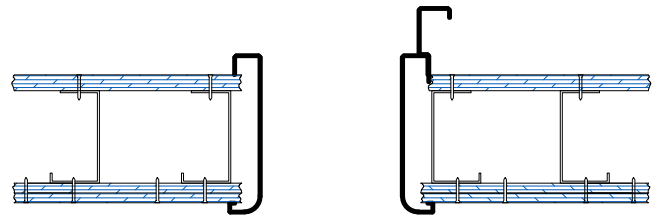


SPLAY JAMBS

ALL JAMB TYPES ARE AVAILABLE FOR EITHER DRY WALL OR MASONRY CONSTRUCTION



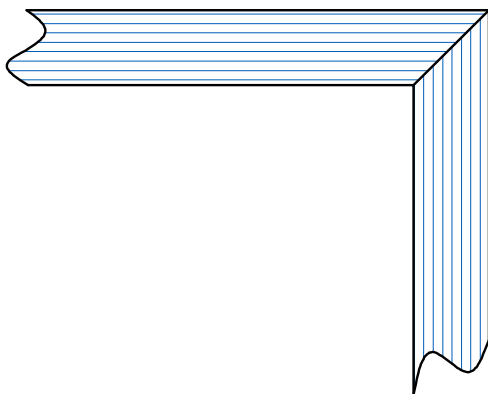
BULL NOSE JAMBS



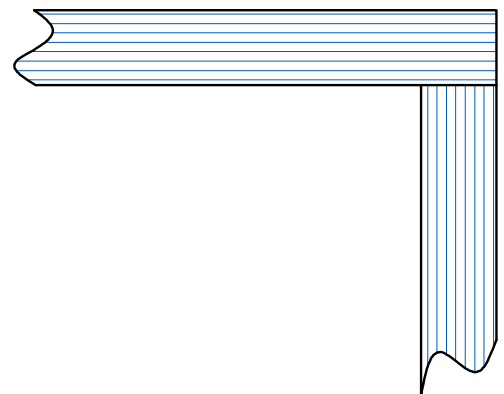
RADIUS JAMBS

HEADS

Standard frames are provided with Projected Heads and Butt Joints.
Flush mitered joints are available on some Jambs.



MITERED JOINT WITH FLUSH HEAD



BUTT JOINT WITH PROJECTED HEAD

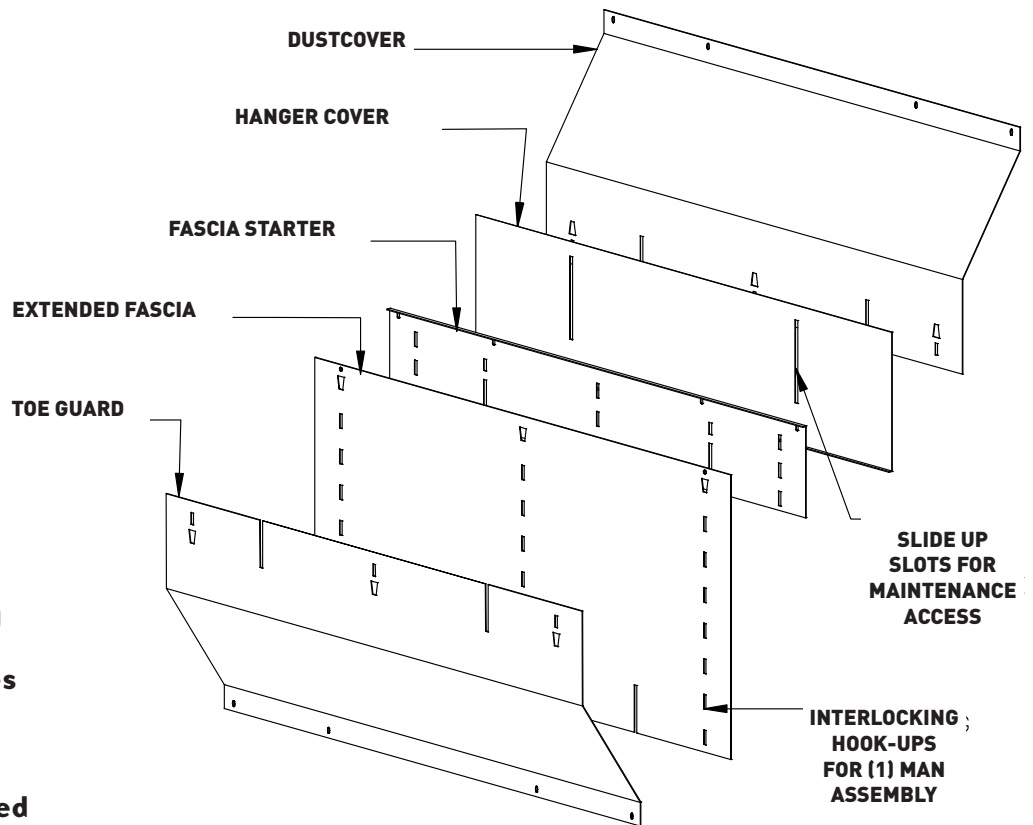
FASCIA AND HANGER COVERS

Conceal shaftway projections between landings.

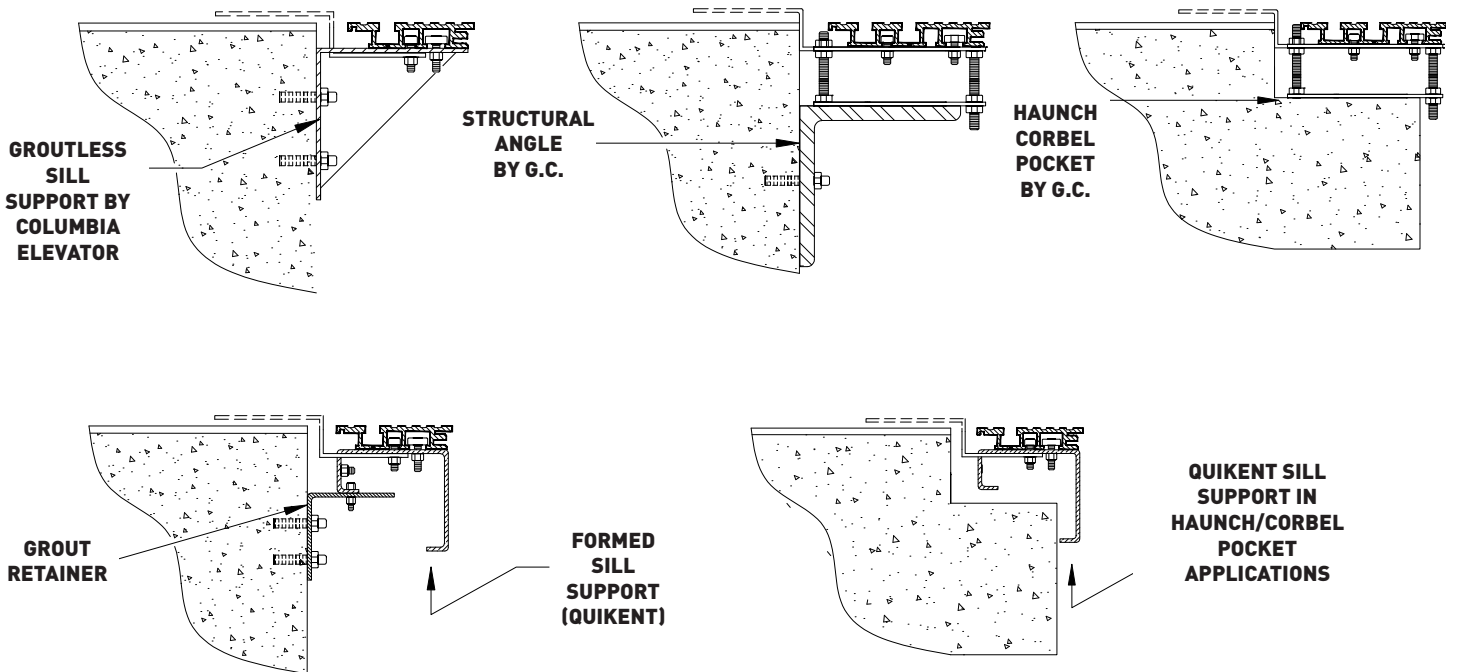
Available in standard and full widths, made of corrosion-resistant, galvanized steel

Conventional entrances are individual freestanding systems per landing. Groutless sill support angles are available as an option.

QuikEnt® Entrances are stacked and have integrated sill support angles, which reduces adjustment time during assembly and installation.



HANGER COVERS & FASCIA



Early in its history, Columbia was issued Underwriters Laboratories label procedures for drywall entrances and doors. In 1985, Columbia tested its 9' high drywall entrance assembly at UL's Northbrook, Illinois facilities and was issued a new expanded label procedure; in 1993, tested for 10', allowing for unlimited opening sizes and transom heights, in any permutation, and for the issuance of Oversize Certificates. Columbia also offers the industry's only entrance assembly that is tested and certified by Warnock-Hersey Int. Inc. for compliance with NFPA 105 for smoke penetration.

Want to see if your entrances would receive UL labels or Oversize Certificates? You can find out, in 7 questions or less, by visiting www.Columbia-Elevator.com and going to "Code Compliance."



COLUMBIA ELEVATOR PRODUCTS Co., Inc.

THE LEADING EDGE IN CAB & DOOR SYSTEMS

Phone: 888-858-1558

Fax: 866-865-7600

Website: www.columbia-elevator.com

E-Mail: info@columbia-elevator.com